

FLOORING

by Villeroy & Boch

Collection 2019



FEELING
AT HOME

VILLEROY & BOCH

Tradition since 1748

Timeless elegance, innovative design and exceptional quality: this is what the name Villeroy & Boch has stood for decades. Based on this tradition, designers and product managers develop collections and concepts that create living environments. Like almost no other brand, Villeroy & Boch is deeply rooted in European culture. And just as only a major brand can do, it has managed to maintain its identity while keeping up with the times.

There are only a few companies in the world that can look back on 270 years of success. What began in 1748 with a small pottery in Audun-le Tiche, France, has now become one of the world's leading brands for tableware, bathroom and wellness. The unique mixture of family responsibility for eight generations and innovative management has made Villeroy & Boch worldwide successfully over the past centuries. Since its foundation, the company has not only

developed into a renowned ceramic manufacturer, but also into an international lifestyle brand. In the course of its 270-year history, various products have set milestones in the company's history. The 14 production sites in Europe, Mexico and Thailand are controlled from the company headquarters in Mettlach/Germany. Around 7,500 employees develop, design and manufacture high-quality ceramic products for markets in 125 countries.



ALT LUXEMBURG

The worldwide popular tableware series dates back to 1770 and is still part of the assortment today. It was recently reinterpreted under the name „Brindille“.

METTLACHER PLATTEN

Eugen Boch's idea to produce a floor mosaic from ceramic for the first time was an unbelievable success at the time. From 1852 the tiles called „Mettlacher Platten“ were produced in Mettlach.

NEWWAVE

For its special design and innovative die-casting process, the series was awarded the Innovation Prize of the German Economy in 2004.

VICLEAN

A modern shower toilet that combines hygiene, comfort, sustainability and innovative design and creates a new dimension in toilet culture.

CORE COMPETENCE

Ceramics

Ceramics have always shaped the history of Villeroy & Boch.
A material that has been constantly reinterpreted and continuously further developed
in the company. With love for craftsmanship. With the latest production methods.
And with a very precise eye for detail.

Villeroy & Boch is divided into the divisions bathroom and wellness and tableware and offers products for private households as well as for projects and objects. The interplay of elegant designs, innovative materials and technical expertise forms the special signature of Villeroy & Boch. The company has already set trends worldwide with numerous innovations. It is regarded as a driving innovator in the industry. In the bathroom and wellness sector, the DirectFlush WC without flushing rim sets new standards of hygiene with its intelligent water supply.

The industry-wide pioneering achievements also include the easy-care ceramic surface CeramicPlus and the material innovation Quaryl®, which enables particularly precise edges and thus an extraordinary shape design. In the field of tableware trends are being set with innovative shapes and food specials with special functions. The brand's modern products convince not only market partners and end consumers, but also jurors of internationally renowned design competitions. Numerous design and innovation awards confirm the constant development of the premium brand.

BATHROOM AND WELLNESS.

The bathroom and wellness products from Villeroy & Boch transform a functional place into an individual wellness area. Whether shower trays, bathtubs, bathroom furniture, toilets, washbasins, shower toilets, toilet seats, urinals, bidets or bathroom accessories - with Villeroy & Boch complete bathrooms can be planned and realised from a single source. Water-saving and easy-care products also protect the environment.



TABLEWARE.

Villeroy & Boch tableware products are associated worldwide with the enjoyment of food and drink. For more than 270 years, our range consisting of high-quality tableware, glass and cutlery collections as well as accessories and gifts, has fascinated our customers and turned every meal, whether a daily lunch or a festive occasion, into a special event.



VILLEROY & BOCH

Flooring

We have been convincing our customers with our products in the areas of tableware as well as bathroom and wellness for decades. As an international lifestyle brand, we now offer them a Villeroy & Boch brand living concept from a single source with the license products flooring, lighting, bathroom textiles and furniture for the living and dining area as well as for the sleeping area.

Villeroy & Boch flooring completes this living concept with four different collections. The line includes both natural-looking decors and urbane designs. Style- and design-conscious consumers who insist on top quality will love Villeroy & Boch Flooring.

The magic of a walk in the forest: we've captured it in clear-cut shapes and timeless

decors. Our sophisticated wood-based products combine this material's natural beauty with flawless workmanship.

Our laminate floors will excite you with their warm, aesthetic surfaces, which are both robust and easy to clean, and with the uniquely brilliant, luxurious ambience they evoke.



HARMONY OAK, VB805



COLLECTION OVERVIEW



Use class 33 · AC5

Panel 1375 × 188 × 12 mm **Box** 5 panels · 1,293 m²

Pallet 56 boxes · 72,38 m²



Use class 33 · AC5

Panel 1380 × 193 × 10 mm **Box** 6 panels · 1,598 m²

Pallet 56 boxes · 89,49 m²



Use class 32 · AC4

Panel 665 × 133 × 8 mm **Box** 14 panels · 1,24 m²

Pallet 70 boxes · 86,68 m²



Use class 32 · AC4

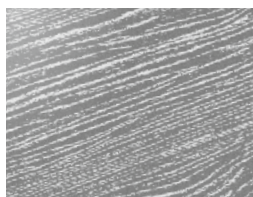
Panel 1380 × 193 × 8 mm **Box** 8 panels · 2,131 m²

Pallet 56 boxes · 119,32 m²

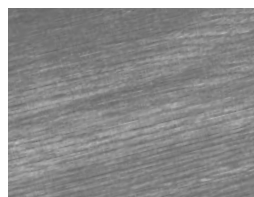
SURFACES



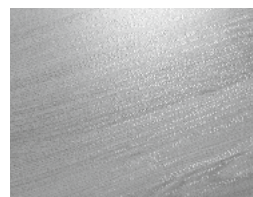
ER - genuine wood appearance due to consistence between pattern and embossing



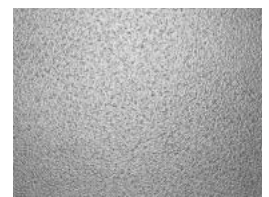
AF - natural and vivid wood texture



ML - with a waxed look and feel



PR - typical wood structure



ST - distinctive stone appearance

DECOR OVERVIEW

Collection **COUNTRY**



VB 1201 · STONE OAK

ER



VB 1202 · CASTLE OAK

ER



VB 1206 · MEADOW TEAK

ER



VB 1207 · WHITE OAK

ER



VB 1208 · VALLEY OAK

ER



VB 1209 · SHEFFIELD OAK

ER

Collection **CONTEMPORARY**



VB 1007 · STRAIGHT OAK

AF



VB 1008 · BRADFORD OAK

AF



VB 1009 · BRIXTON OAK

AF



VB 1010 · LONDON OAK

AF



VB 1011 · PEARL OAK

AF

Collection
HERITAGE



VB 805 · HARMONY OAK

AF



VB 806 · HARMONY OAK BEIGE

AF



VB 807 · HARMONY OAK GREY

AF



VB 808 · CERSAI

ST

Collection
COSMOPOLITAN



VB 825 V · WELLNESS OAK

AF



VB 826 V · PURE ELM

AF



VB 827 V · BALTIMORE OAK

AF



VB 828 V · SUNRISE ELM

AF



VB 829 V · DUBLIN WALNUT

PR



VB 830 V · CASABLANCA

ML





COUNTRY

As beautiful as nature

No wood is like another. Knots and irregular grains give these decors their natural, authentic look. COUNTRY is a robust floor: its hardwearing panels evoke a rustic ambience which can also compellingly underscore sleekly modern or imaginatively bold interiors.



COUNTRY
Stone Oak

STONE OAK

12 mm · 1-strip · ER · V4 groove

VB 1201





COUNTRY
Castle Oak

CASTLE OAK

12 mm · 1-strip · ER · V4 groove

VB 1202





COUNTRY
Meadow Teak

MEADOW TEAK

12 mm · 1-strip · ER · V4 groove

VB 1206





COUNTRY
White Oak

WHITE OAK

12 mm · 1-strip · ER · V4 groove

VB 1207





COUNTRY
Valley Oak

VALLEY OAK

12 mm · 1-strip · ER · V4 groove

VB 1208





COUNTRY
Sheffield Oak

SHEFFIELD OAK

12 mm · 1-strip · ER · V4 groove

VB 1209







CONTEMPORARY

Elegant ambiance

Everything in perfect balance: the classy CONTEMPORARY decors conjure up tasteful interiors in which refined living culture can thrive.

These panels' exquisite surfaces, which perfectly replicate neatly laid, solid-wood boards, exude peace and constancy: floors that can continue to be enjoyed for a long, long time.



CONTEMPORARY

Straight Oak

STRAIGHT OAK

10mm · 1-strip · AF · V4 groove

VB 1007





CONTEMPORARY
Bradford Oak

BRADFORD OAK

10mm · 1-strip · AF · V4 groove

VB 1008





CONTEMPORARY
Brixton Oak

BRIXTON OAK

10mm · 1-strip · AF · V4 groove

VB 1009





CONTEMPORARY
London Oak

LONDON OAK

10mm · 1-strip · AF · V4 groove

VB 1010





CONTEMPORARY
Pearl Oak

PEARL OAK

10mm · 1-strip · AF · V4 groove

VB 1011







HERITAGE

Inspired by tradition

Available in different shades, this highly up-to-date and yet classic-looking herringbone-flooring can be combined with practically any furnishing style. HERITAGE lends even the most minimalist ambience a subdued nuance of Art déco and Art Nouveau. Inevitably, the panels arranged in staggered 90° angles recall the golden age of Viennese cafés, Italian opera houses and classical theatres without impairing the modernity of the interior.



HERITAGE
Harmony Oak

HARMONY OAK

8mm · 1-strip · AF · V4 groove

VB805





HERITAGE

Harmony Oak Beige

HARMONY OAK BEIGE

8 mm · 1-strip · AF · V4 groove

VB806





HERITAGE

Harmony Oak Grey

HARMONY OAK GREY

8mm · 1-strip · AF · V4 groove

VB807





HERITAGE

Cergai

CERSAI

8mm · 1-strip · ST · V4 groove

VB808







COSMOPOLITAN

Urbane charm

At home in the world. COSMOPOLITAN is persuasive with its blend of elegance and suitability for everyday use. This collection comprises six wood looks which ideally underscore rooms' character.



COSMOPOLITAN
Wellness Oak

WELLNESS OAK

8mm · 1-strip · AF · V4 groove

VB 825 V





COSMOPOLITAN
Pure Elm

PURE ELM

8mm · 1-strip · AF · V4 groove

VB 826V





COSMOPOLITAN
Baltimore Oak

BALTIMORE OAK

8mm · 1-strip · AF · V4 groove

VB827V



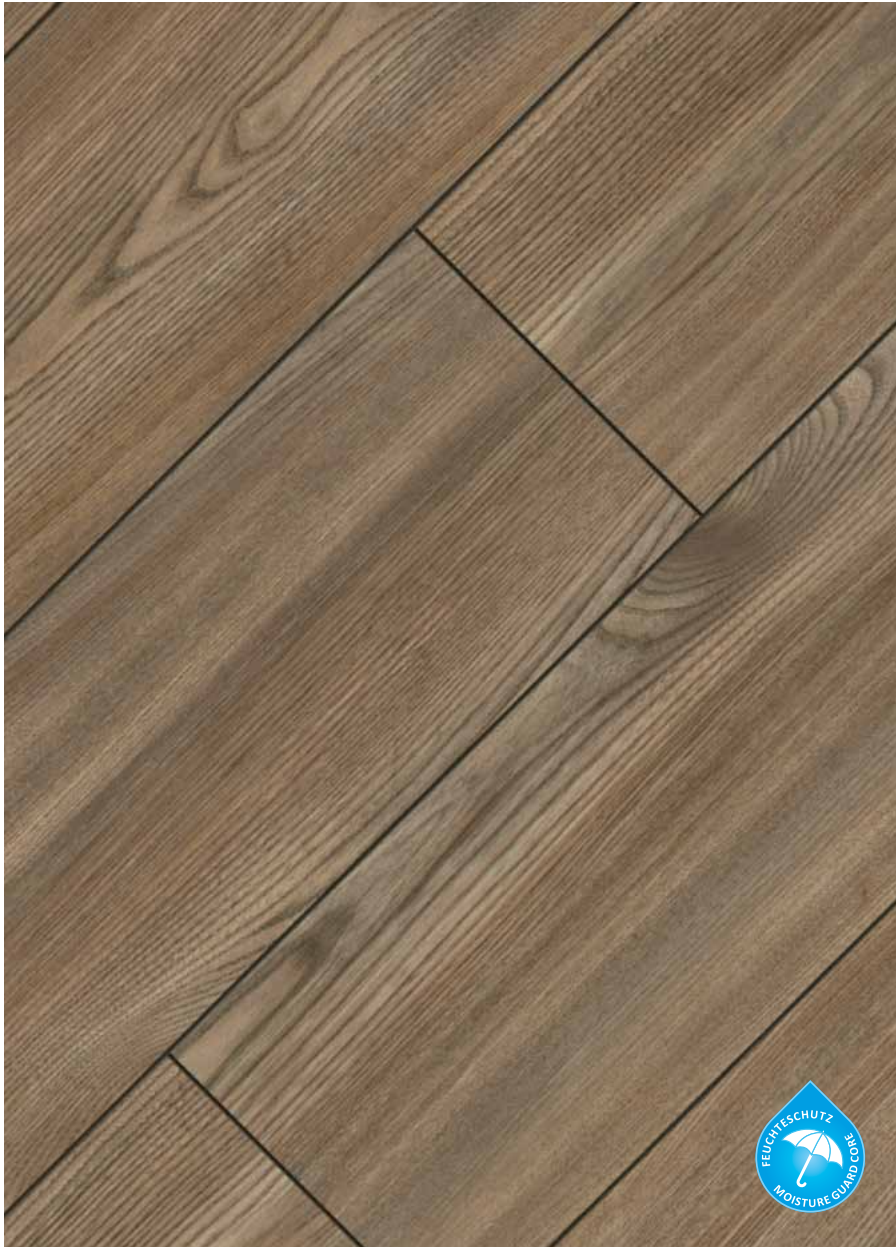


COSMOPOLITAN
Sunrise Elm

SUNRISE ELM

8mm · 1-strip · AF · V4 groove

VB828V





COSMOPOLITAN
Dublin Walnut

DUBLIN WALNUT

8mm · 1-strip · PR · V4 groove

VB 829 V





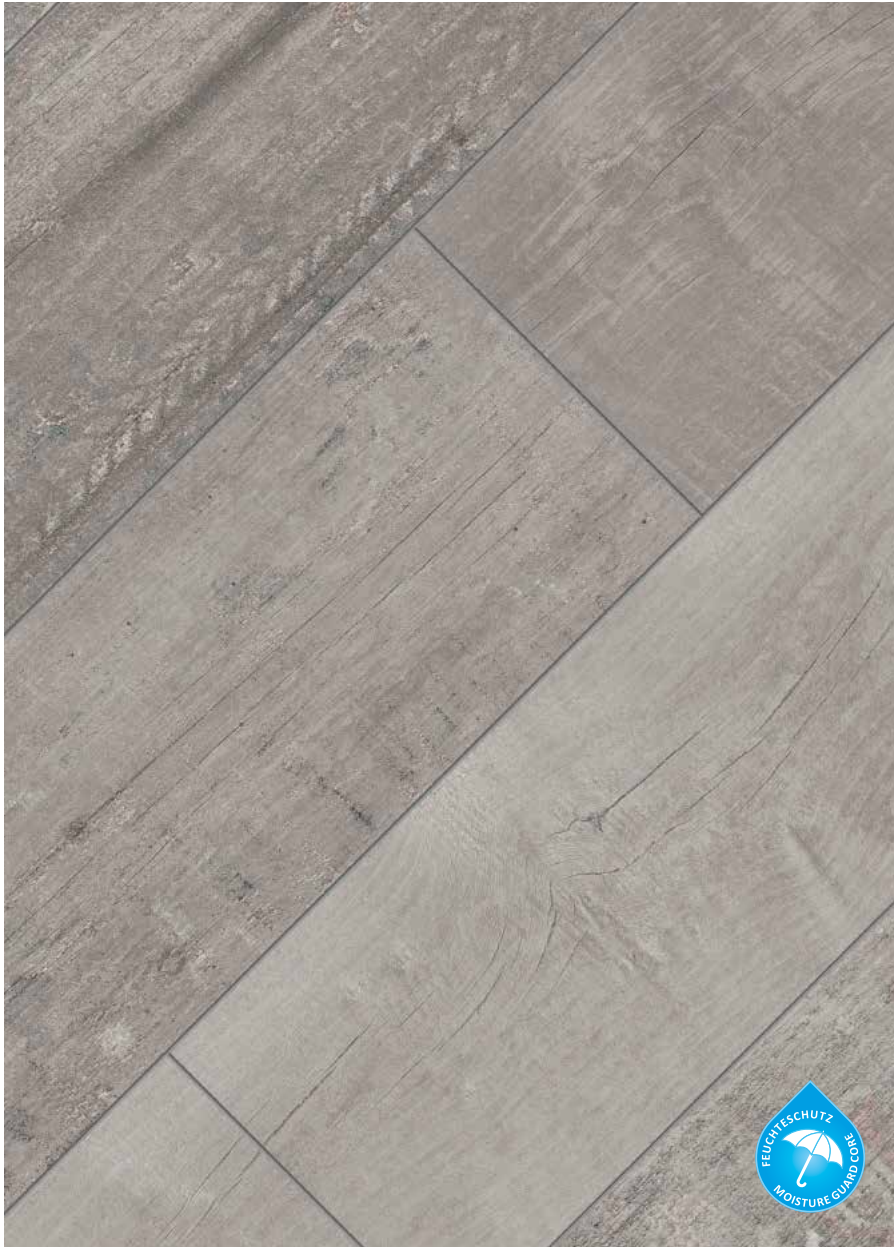
COSMOPOLITAN

Casablanca

CASABLANCA

8 mm · 1-strip · ML · V4 groove

VB 830 V





STABLE CONNECTION - EVEN WITH THICK LAMINATE FLOORS

COUNTRY, CONTEMPORARY, COSMOPOLITAN:

Installing a floor becomes child's play: A fingertip is enough to join panels - simply unpack, lay, snap together and done. No effort involved - your hammer and block can stay in the tool box.

Further information and installing instruction of HERITAGE collection can be found here:

VILLEROYBOCH.COM/HERITAGE



Villeroy&Boch laminate flooring delivers a small but crucial benefit: so-called "grow-to-measure joints". Thicker laminate floors call for thicker snap-together joints. Villeroy&Boch uses a thicker CLIC joint for 12mm panels than for 8mm panels. It "grows" with the thickness of the panels. This makes these elements stronger and extends their useful life. As they are thicker, more material meshes and the joint is stabilised. This is especially noticeable when installing the flooring: the panels are easier to click into place. Professional installers and DIY enthusiasts alike appreciate this clever detail.

PANEL CONSTRUCTION

Villeroy&Boch laminate consists of at least three stable layers which ensure the extraordinary durability and unique quality of Villeroy&Boch floors.

- a** The top surface of the flooring consists of a specially resistant protective overlay film. This is fused with an attractive resinated decorative film into a practically abrasion-proof, hardwearing surface.
- b** Extremely dense HDF fiberboard forms the supportive core (HDF, E1).
- c** On the undersurface of the core a dampness-impeding stabilization film ensures and preserves the high structural stability of Villeroy&Boch laminates.





MOISTURE GUARD

The Villeroy&Boch laminate floorings have been optimised so as to be able to withstand the effects of moisture over time. Therefore they are suitable for damp rooms thanks to its significantly reduced swelling behaviour.

- The natural product is particularly suitable for children and pets who are in frequent contact with the laminate flooring. It can easily forgive a mishap or two.
- The floors with moisture protection can be easily cleaned with a damp mop.
- Although designed for improved resistance to water and moisture, it is not waterproof and excessive wetting and standing water should be avoided.

Not suitable for outdoor areas, rooms with permanently high moisture load, e.g., shower cubicles, saunas and rooms with floor drains.

FLOOR HEATING

Villeroy&Boch laminate floors can be readily installed upon under-floor heating, serve well and even help to save on heating costs.

- Be sure to heat mineral underlays before flooring installation to eliminate any excess dampness
- Have a heating specialist in your area give you a heating report
- Ensure that during installation, the surface temperature of the floor is at least 15 °C (60 °F)
- For dampness insulation and as a vapor barrier, use a PE film (0.2 mm) underlayment
- For sound absorption you can use PE foam or an underlay mat
- At the beginning of each heating period, when you first turn on the underfloor heating, raise the temperature gradually in 5 °C (9 °F) increments per day until you reach the desired temperature. The floor's surface temperature should not exceed 26 °C (80 °F)

THE RIGHT BASIS

Once you have decided for a laminate floor, when quality and appearance are a perfect fit, then you need to check the requirements for perfect installation. Very important is a suitable subfloor:

- Old flooring such as wood, firmly-adhering PVC, dry ceramic, linoleum
- Cement screed (max. residual moisture: 2.0 CM%)
- Anhydrite cement and anhydrite flow cement screed (max. residual moisture: 0.3 CM%)
- Magnesia screed (max. residual moisture: 3.0 CM%)
Have a screed specialist give you a residual moisture report!

Floors in wet rooms / damp rooms, saunas, carpeting and xylolith are not suitable subfloors. The subfloor must be dry, level, firmly affixed and clean. Minor unevenness can be compensated with an underlay mat or - if exceeding 3 mm/m - sanded down or leveled with a filler.

CLEANING AND CARE

Villeroy&Boch floors are not only hygienic, but also very easy to look after.

- Sweep the dry floor with a soft broom or use a vacuum cleaner.
- Marks and dirt can be wiped off with a slightly damp cloth or damp mop following the grain of the plank.
- Please use felt pads under furniture and soft rubber castors on chairs.
- Place door mats in special areas (hall, entrance). In industrial buildings, provide footwells.
- Minor damage to the floor can easily be repaired with a laminate repair kit. In case of more serious damage, please consult a specialist.

SKIRTINGS

Our skirtings blend perfectly with all decors. Thanks to the invisible clipholder system they are installed in a trice. And the integrated trunking device helps you to get TV and audio cables out of the way.



KTEX 1

MDF, available in all decors,
for attachment system
19 × 58 × 2400 mm
10 pcs/box

Clips, bolts, screws
30 pcs/box



KTEX F

MDF, white, chamfered, paintable
18 × 80 × 2400 mm
8 pcs/box



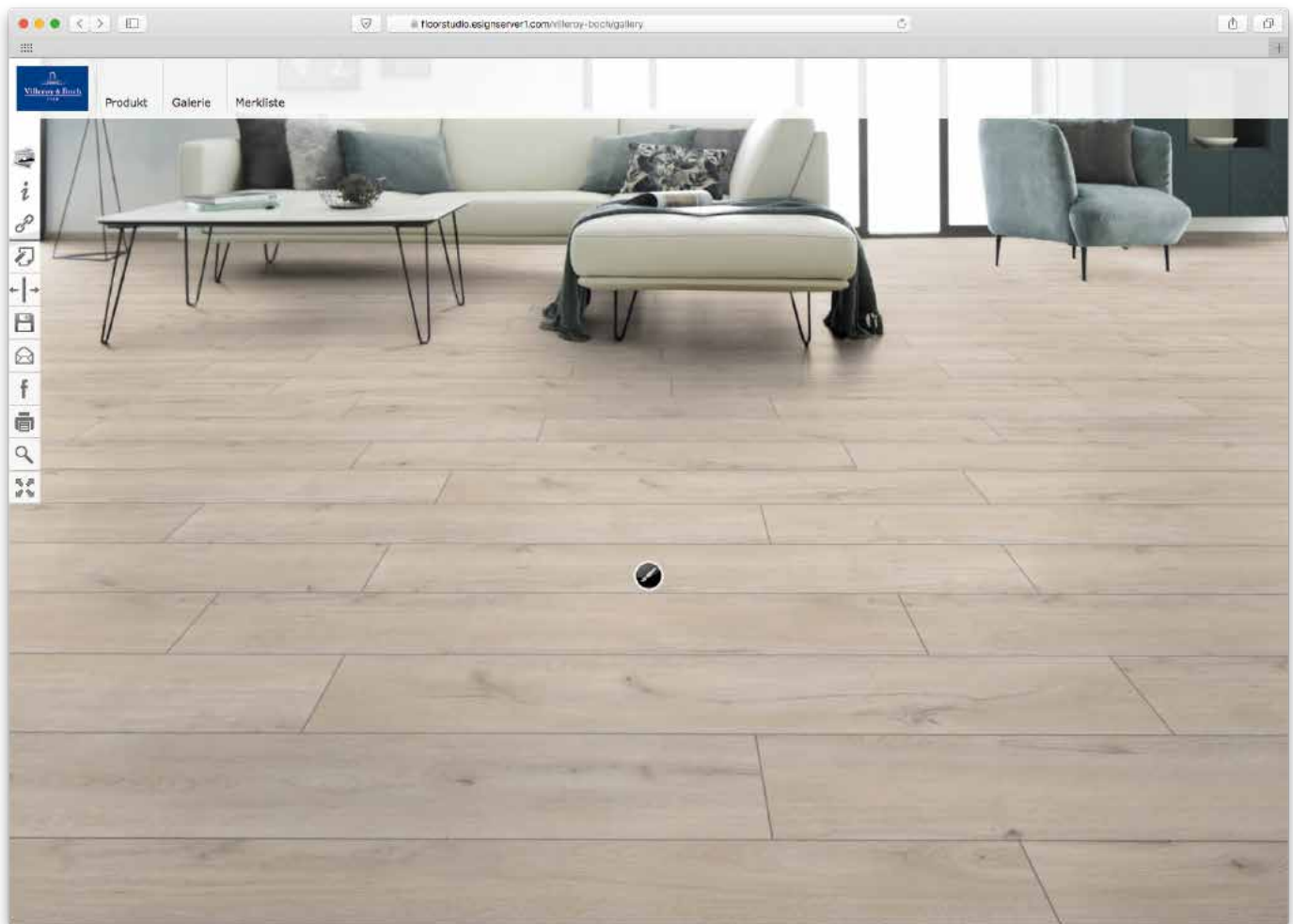
KTEX P

MDF, white, profiled, paintable
18 × 80 × 2400 mm
8 pcs/box



ONLINE FLOOR STUDIO

Experience the effect of differing woods, ornamentation, wall and furniture colours in an accurate representation of any room. The online floor studio is the ultimate tool for both end user and salesman.



Colour selector

With one mouse click you can select the appropriate shade and tone from our whole collection.

Additional selection criteria

These offer the perfect opportunity to narrow down your search for the perfect laminate. You can select from various qualities, like collection, decor number or panel thickness.

Surface view

Allows you to view elements from both head-on and in perspective.

Notes

Gives you the opportunity to get extra information about any of our products simply and conveniently.

The link function

With the link function, you can put your ideas before customers, suppliers, users and planners.

VILLEROYBOCH.COM/FLOORSTUDIO



OUR ENVIRONMENTAL PRODUCT DECLARATION*

In order for environmental product balance sheets to be meaningful, they must be objectively comparable. So to let our customers easily understand and contrast our lifecycle analyses and environmental product data with those of other materials, we have firmly committed ourselves to a policy of total product transparency. We openly and voluntarily communicate the ecological balance sheets of our wood-based products in our Environmental Product Declarations (EPDs). Each EPD is issued by the Institute Construction and Environment e.V. (IBU) in a format which was developed on the basis of internationally valid ISO standards in close collaboration with building and environmental authorities in Germany.



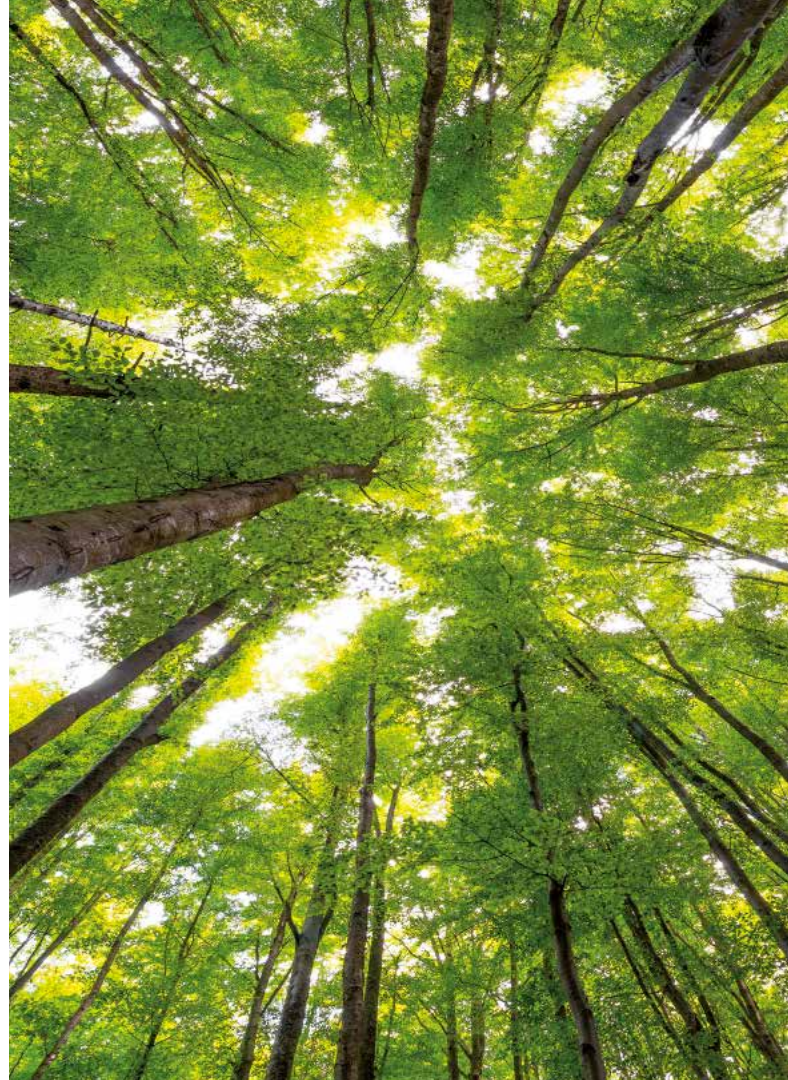
* Our Environmental Product Declarations (EPDs) are globally acknowledged and accepted Type III environmental labels conforming to ISO 14025.

WE STAND FOR ECOLOGY

The only way to master major challenges is for all players to pull on one rope. One of the biggest and most urgent tasks facing humanity today is to protect the environment. 'Together we are strong!' - this statement also applies to achieving the sustainability goals we have set ourselves.

All of our staff are involved in protecting the environment on a day-to-day basis. Each and every one of them is appropriately informed, instructed and trained. This ensures that every department has the environmental expertise it requires.

We use our 'management for the earth' programme to raise the level of environmental awareness in the entire Villeroy&Boch team. Our environmental management efforts focus on achieving the eco-efficiency defined in our corporate objectives. Every product that leaves our factory must exhibit both excellent price/performance and superb environmental compatibility. This starts with the exclusive use of legal, certified raw materials from sustainably managed forests, continues with rigorously monitored production, and is also ensured during subsequent utilisation and ultimate disposal of our products.



WE HAVE BIG PLANS

We have a clearly defined goal: we want you, us and future generations to be able to enjoy living in good health on our unique blue planet tomorrow as well. We are therefore continuing to develop eco-friendly wood-based materials which are healthy for you and the environment alike.

Right now we are preparing EPDs for all of our laminate floorings to facilitate direct comparison and checking of their environmental benefits.

QUALITY ON PRINCIPLE

Not only do Villeroy&Boch floors meet the prescribed norms, they consistently exceed them. This is possible because Villeroy&Boch floors are produced fully integrated (from the tree to the finished panel) and pass through extensive testing and measuring facilities. For this reason, guarantees can be given on Villeroy&Boch floors which go far beyond warranties under law.

Villeroy&Boch provides buyers in addition to the unencumbered guarantee under law, an additional guarantee covering the abrasion resistance of the floor's surface. It extends from the date of purchase and covers the products as follows:

CONDITIONS OF GUARANTEE

Villeroy&Boch laminate panels must be checked before and during installation for any defects. No liability is accepted for laminate flooring installed despite visible defects. Villeroy&Boch laminate floors must be installed properly according to the instructions, in a dry room, and in accordance with the respective use class.

Abrasion areas on Villeroy&Boch laminate floors must be clearly visible and at least 1 cm² in size. And in particular the design layer must be completely abraded. No liability is accepted for abrasion on the edges of the elements or for unusual or improper use, and in particular for damage caused by mechanical stress. Validity of guarantee is dependent on regular cleaning and maintenance of Villeroy&Boch floors as described in the care instructions.

Claims under guarantee are valid only if submitted within 30 days of ascertaining damage and accompanied by the original receipt from the retailer. In investigating a guarantee claim, Villeroy&Boch retains the right to examine the floor in question on site.

OUR GUARANTEE

In cases falling under guarantee, Villeroy&Boch will deliver a replacement for the damaged element. If the flooring in question is no longer available, then the buyer can choose a replacement of equal value from the current Villeroy&Boch product line.

Since an annual 10% depreciation in the value of Villeroy&Boch laminates can be assumed, delivery of a compensation product is dependent on payment of the appropriate difference by the buyer. If an equivalent replacement is not available, the buyer can demand financial compensation. In this case Villeroy&Boch will reduce the refund amount by 10% for each year of use of the Villeroy&Boch laminate flooring.

No liability is accepted for financial losses or further damages, especially consequential damages such as those incurred during installation or removal, or transport costs for damaged Villeroy&Boch laminate floors.

COUNTRY

- Private use: 30 years guarantee
- Commercial use: 5 years guarantee according to manufacturer's conditions

CONTEMPORARY

- Private use: 30 years guarantee
- Commercial use: 5 years guarantee according to manufacturer's conditions

HERITAGE

- Private use: 25 years guarantee
- Commercial use: 3 years guarantee according to manufacturer's conditions

COSMOPOLITAN

- Private use: 25 years guarantee
- Commercial use: 3 years guarantee according to manufacturer's conditions



Manufacture and product control are in accordance with DIN EN 13329. The right to technical modifications is reserved. The illustrations may differ from the actual products. As of 05-2019.

FURTHER LICENSEES

of the sector "living"

Furniture for the living and dining area

Collection C Möbel Vertriebsgesellschaft mbH

licensee for box furniture (living and dining)

Brühl 10f
99423 Weimar

Contact:

Tel.: +49 3643 496495

E-Mail: vertrieb@collection-c.de

Homepage: www.collection-c.de



W. Schillig Polstermöbelwerke GmbH & Co. KG

licensee for upholstered furniture (living and dining)

Am Weinberg 20-22
96237 Ebersdorf-Frohlach

Contact:

Tel.: +49 9562 / 37-0

E-Mail: info@schillig.de

Homepage: www.schillig.com



Furniture for the sleeping area

Fey & Co. GmbH

licensee for upholstered and box spring beds

Rheiner Straße 145
48282 Emsdetten

Contact:

Tel.: +49 2572 1540

E-Mail: info@fey.de

Homepage: www.fey.de



Furniture for the sleeping area

Geha Möbelwerke, Gebr. Henrichsmeyer GmbH & Co. KG *licensee for bedroom furniture*

Gehastraße 4
33161 Hövelhof

Contact:

Tel. : +49 5257 505151

E-Mail: info@geha-moebel.de

Homepage: www.geha-moebel.de



Further licensees of the sector “living”

Miles GmbH

licensee for bathroom textiles

Harckesheyde 91 - 93
22844 Norderstedt

Contact:

Tel.: +49 40 94364-0

E-Mail: villeroyboch@texnorte.com

Homepage: www.milesgroup.eu



Sompex GmbH & Co. KG

licensee for lighting

Werftstrasse 20-22
40549 Düsseldorf

Contact:

Tel: +49 211-5228070

E-Mail: villeroy-boch@sompex.de

Homepage: www.sompex.de



Imprint

VILLEROY & BOCH FLOORING

*SWISS KRONO TEX GmbH & Co. KG
Wittstocker Chaussee 1
16909 Heiligengrabe
Germany*

floors.vb@swisskrono.com

Your sales consultant

